



# Adastral Park update

16 January 2025

# What is Adastral Park?

- BT's primary location for R&D
- A cluster of 140 businesses including BT's strategic suppliers (75 are tenants on-site, 65 are virtual members)
- Home to BT's Networks Operations Centre
- Location of the Gemini Test and Integration facility where all the components of BT's network are modelled and tested
- A high security development centre for government contracts
- Centre for Openreach's research and test facilities, with the Four Acre Site long-term test facility adjacent
- The site is a 100 acres (40 hectare) freehold campus, of which 17,639m<sup>2</sup> is utilised for testing and specialist network facilities, making it one of the largest in Europe, encompassing 72 different networks and over 6,000 devices
- Home to the University of Suffolk's Digitech Centre
- Adastral Park is recognised by UK government as a centre of expertise in telecommunications



# Contents

- Vision
- Consolidation
- Key functions (people, investment, facilities)
- Strategy progress
- Opportunities for growth (IM cluster, events, showcases, etc)



# 1. The Adastral Park vision and strategy

We are working with stakeholders to create a simple vision for Adastral Park based around three key threads. We have engaged Plexal as domain experts to develop this vision into a plan aligned to industry and government initiatives.

## A world-class R&D location

- Brilliant environments for our people.
- Collaboration with a co-located technologists – supply chain, partners and key stakeholders.
- Showcasing our capabilities and expertise, helping the UK to gain telecoms market share.

## A champion for the nation

- BT Group to be recognised leader in our field by government by leveraging Adastral Park as a key national asset.
- Adastral Park famous for:
  - Network operations.
  - Network technology & Innovation.
  - Security.
- Support the economic wellbeing of BT Group and the UK economy.

## A beacon for the region

- Create a strong collaborative environment for tech companies, local government & regional authorities.
- Close relationships with regional universities and other educational establishments, creating a pipeline of talent for BT Group and the region.
- Advocate for initiatives for skilling the nation, in the region.

# 2. Adastral Park consolidation plan

We are consolidating the BT Group functions at Adastral Park into a smaller footprint, with fewer office and lab spaces, to focus investment, reduce operational costs and open opportunity for development of the areas BT no longer requires.

The site strategy is for BT to vacate the north part of the site and consolidate in a smaller set of buildings.

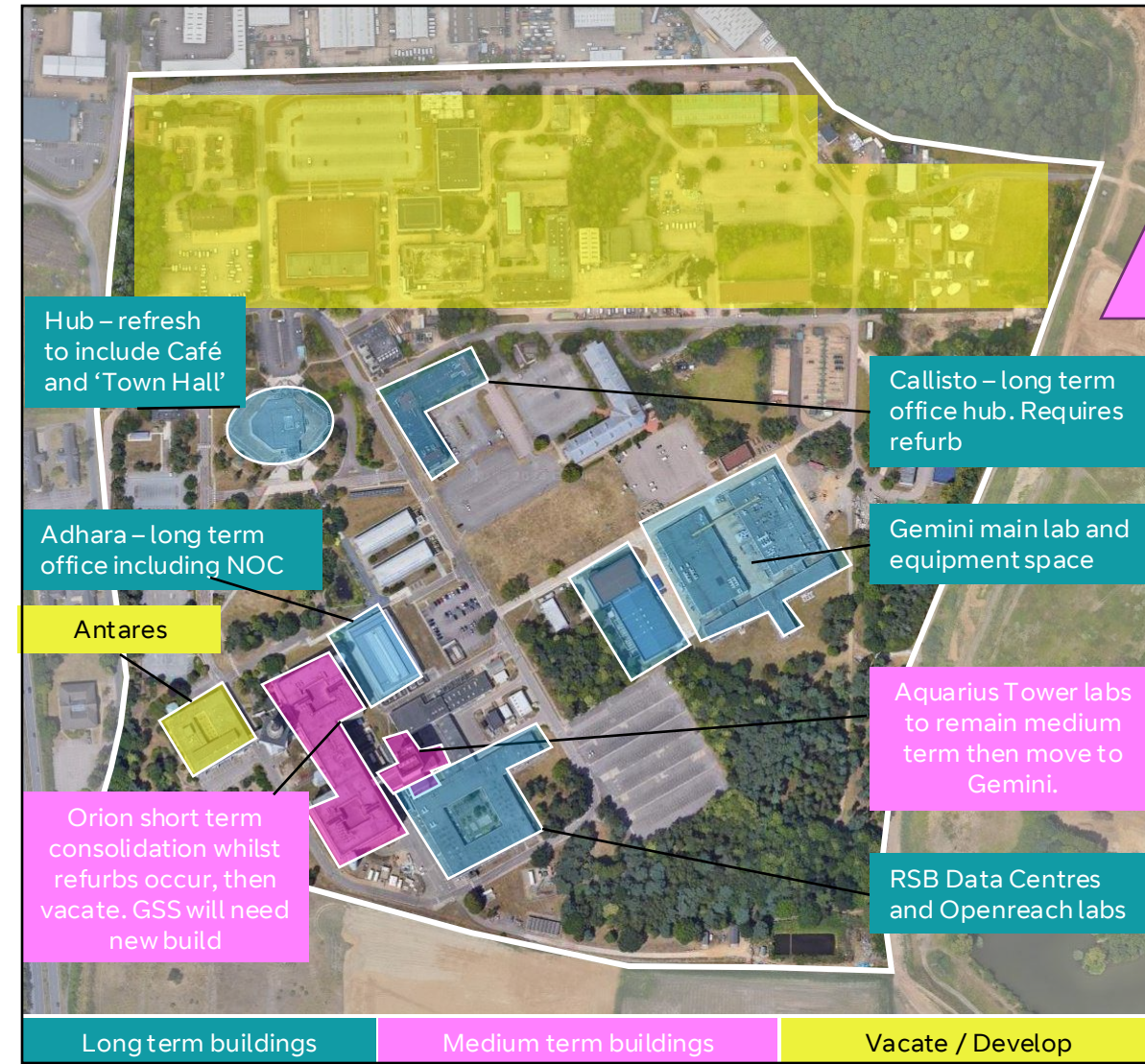
Due to the complex nature of the test facilities and labs on site, consolidation will be phased over several years.

Most people on site will be consolidated into the medium-term strategic buildings by end of Q4 FY25.

In the longer term, Callisto is proposed to be refurbished as office space for colleagues who do not require security clearance, and a new specialist security building will be constructed for colleagues that do.

This will enable the vacation of the Orion building in the long term.

**Imminent refresh of the Hub** – focusing on creating a convening point to do business, collaborate and exchange knowledge. ~£600k+ investment.



# 3. Key functions of Aداstral Park

**Adastral Park contains many technical facilities and supporting infrastructure that are important to the telco sector.**

**BT has made a long-term commitment to operate Adastral Park with 1,800 technologists with high quality accommodation and labs.**

We have invested heavily in Adastral Park as a specialist technical location with facilities that include:

- The Gemini Network Integration Facility is the largest telecoms test facility in Europe that contains models and test facilities for long-term the components that make up the BT network. In 2020, relocation costs were estimated to be in excess of £250m.
- The Openreach labs are a key enabler for innovation, design and testing for all the active electronics that power the Openreach broadband and business networks.
- A specialist security development area (including both high-side and low-side environments) commissioned in 2020 at a cost of ~£22m.
- A specialist building constructed for a government contract in 2018 at a cost of ~£7m.
- Data centres - new Network Cloud Data Centre completed 2024 (£5m) and the existing 'tech suites'.
- BT'S Network Operations Centre (NOC) manages, monitors and maintains BT's UK and global core Network and IT Infrastructure underpinning more than £20+ billion of revenue for BT Group, and supports the nation's critical infrastructure.
- To ensure service to the Network Operations centre, Data Centres and test facilities a resilient dual feed High Voltage (HV) power infrastructure was installed in 2016 at a cost of £6m. This is fed from the grid and the 8MW Foxborrow Solar array.
- Collocation of development teams with operational, research and also partners such as Nokia, Cisco and others has been proven to demonstrate operational efficiencies.

# 4. Adastral Park strategy progress

We have been working with Plexal, Government, and enterprise stakeholders and have identified areas to pursue, aligned to government industrial policies.

	1. Gain insight	2. Validate	3. Prioritise	4. Plan
Process	<p>Gain insight from key stakeholders, from 1:1 sessions and survey.</p> <p>Distil feedback into key theme insights.</p>	<p>Based on insight gained, opportunity areas identified.</p>	<p>Using collective regional knowledge, identify and agree on priority of the focus areas, aligned with our Economic Strategy, and based on perceived impact to the region.</p>	<p>Using prioritised areas, discuss and agree point interventions &amp; owners to take away and action.</p>
Progress	<p>1:1 “interviews” conducted before new year.</p> <p>Surveys conducted with internal BT and regional stakeholders.</p> <p>Primary research on areas of coalescence between government policy and our technical capability</p>	<p>Internal BT working sessions scheduled throughout January.</p> <p>Needs Accelerator with enterprise, academic &amp; government stakeholders at end of January.</p> <p>Workshop with key regional stakeholders scheduled for early February.</p>		<p>Recommendations and plan to be in place by end February.</p> <p>Will share with this board.</p>

# 5. Opportunities for growth

**We would like a masterplan that sets out the evolution of Adastral Park, defining a thriving open science cluster with a secure core, that is an enabler for business growth, building on the presence of global telecoms supply chain.**

## Enablers in progress

- Improved transportation links working with Suffolk CC and Taylor Wimpey (A12 MRN, Mobility hub and north road)
- Improved accessibility for businesses and visitors

## New opportunities

- Regional accelerator (Innovation Martlesham 2.0)
- Open showcases, serving regional businesses and key sectors as defined in the Suffolk Economic Strategy
- Access to event and meeting spaces (e.g. Exhibition Hall, meeting rooms, hotdesking)
- Supporting wider regional tech convergence campaigns
- Exploitation of Intellectual Property

## Building on existing relationships

- Building on the successful public/private partnership, further support for University of Suffolk / Digitech Centre (space to grow, opportunity for engineering, training for other sectors)
- Space East – supporting Suffolk’s growth of the sector
- Adastral Park 50<sup>th</sup> anniversary

***Are there immediate opportunities that you would like us to explore further and report back on?***

